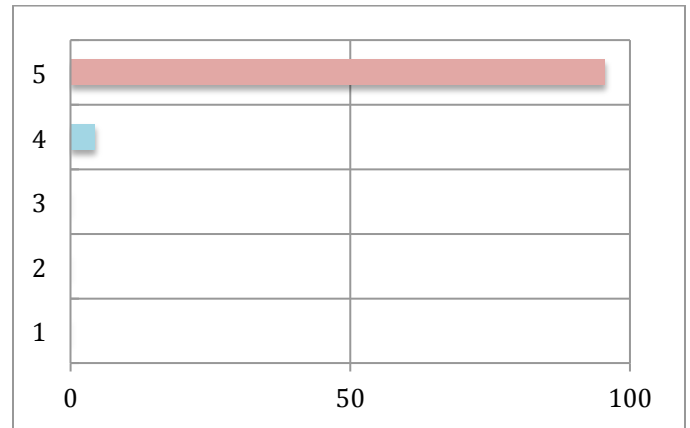


## Fall 2017 – Guest Lecture Evaluation Report for PSYC 2260

1. The guest lecturer was prepared.

Strongly Agree	43	95.56%
Agree	2	4.44%
Uncertain	0	0%
Disagree	0	0%
Strongly Disagree	0	0%

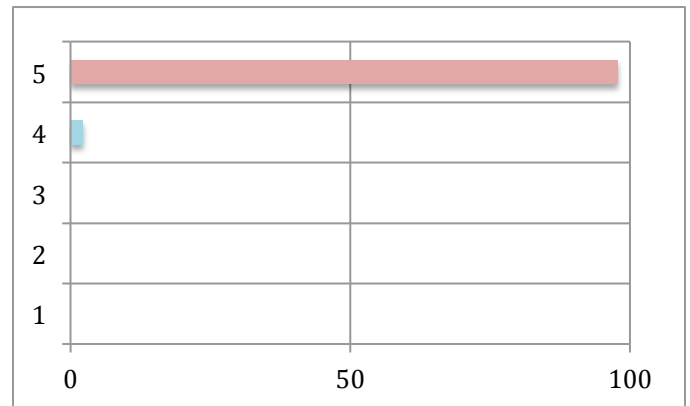
Mean	4.95
Median	5
Mode	5
Standard Deviation	0.21



2. The guest lecturer showed enthusiasm about the subject matter.

Strongly Agree	44	97.78%
Agree	1	2.22%
Uncertain	0	0%
Disagree	0	0%
Strongly Disagree	0	0%

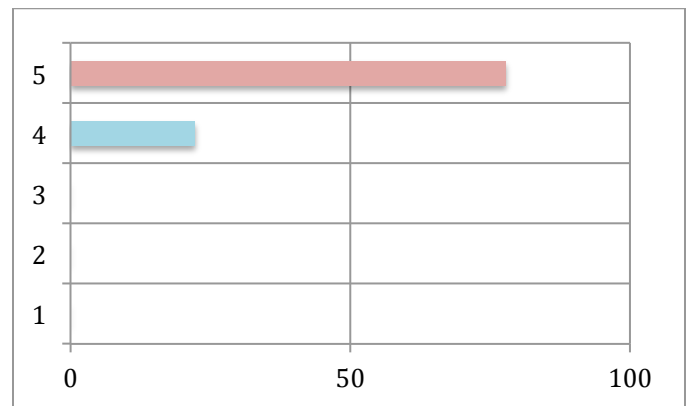
Mean	4.97
Median	5
Mode	5
Standard Deviation	0.15



3. The guest lecturer stimulated interest in the subject matter.

Strongly Agree	35	77.78%
Agree	10	22.22%
Uncertain	0	0%
Disagree	0	0%
Strongly Disagree	0	0%

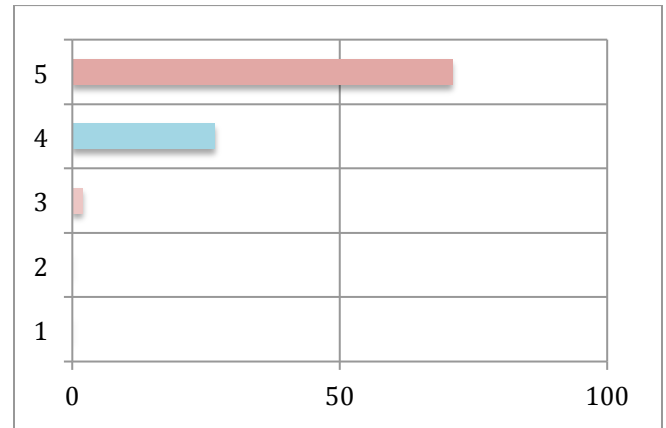
Mean	4.78
Median	5
Mode	5
Standard Deviation	0.42



4. The guest lecturer's explanations were clear.

Strongly Agree	32	71.11%
Agree	12	26.67%
Uncertain	1	2%
Disagree	0	0%
Strongly Disagree	0	0%

Mean	4.69
Median	5
Mode	5
Standard Deviation	0.51



5. How would you rate this guest lecturer overall as a teacher?

Excellent	35	77.78%
Very Good	10	22.22%
Good	0	0%
Fair	0	0%
Poor	0	0%

Mean	4.77
Median	5
Mode	5
Standard Deviation	0.42

