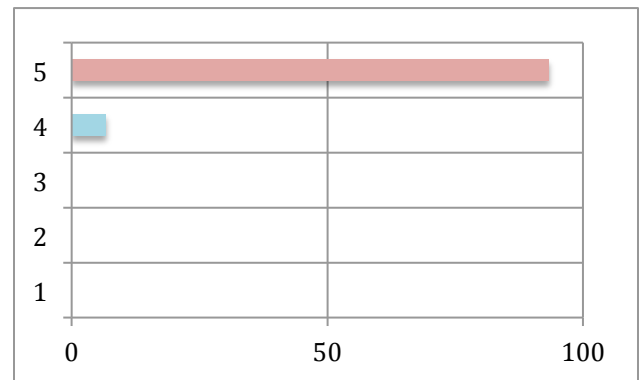


Spring 2017 – Guest Lecture Evaluation Report for PSYC 3366

1. The guest lecturer was prepared.

Strongly Agree	38	93.33%
Agree	2	6.66%
Uncertain	0	0%
Disagree	0	0%
Strongly Disagree	0	0%

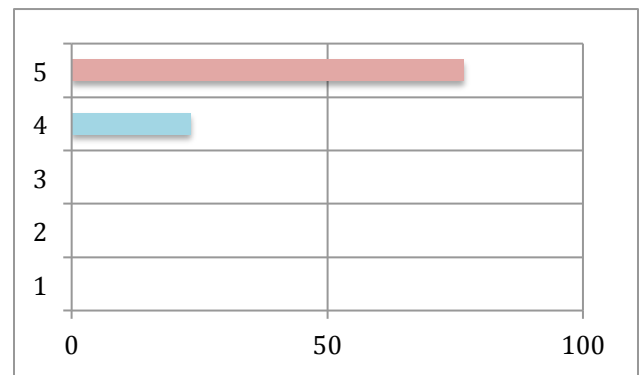
Mean	4.93
Median	5
Mode	5
Standard Deviation	0.25



2. The guest lecturer showed enthusiasm about the subject matter.

Strongly Agree	23	76.66%
Agree	7	23.33%
Uncertain	0	0%
Disagree	0	0%
Strongly Disagree	0	0%

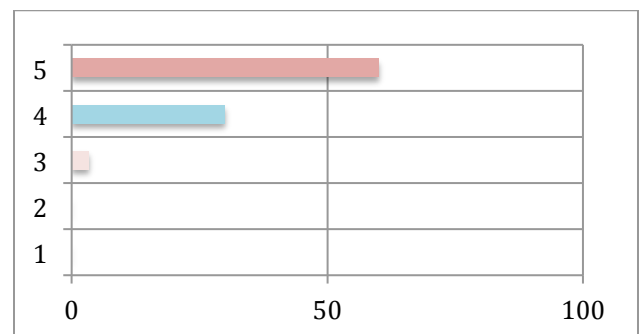
Mean	4.76
Median	5
Mode	5
Standard Deviation	0.43



3. The guest lecturer stimulated interest in the subject matter.

Strongly Agree	18	60.00%
Agree	9	30.00%
Uncertain	1	3.33%
Disagree	0	0%
Strongly Disagree	0	0%

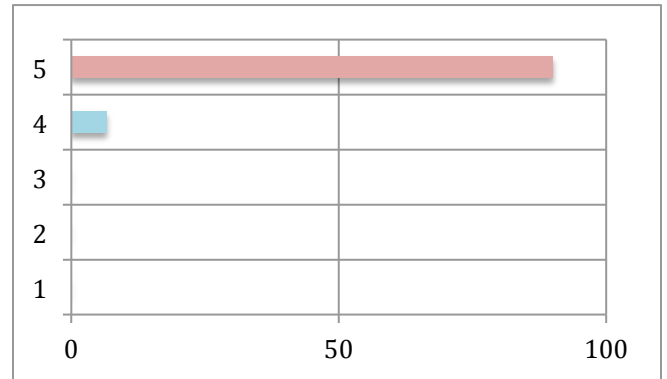
Mean	4.53
Median	5
Mode	5
Standard Deviation	0.61



4. The guest lecturer's explanations were clear.

Strongly Agree	27	90.00%
Agree	2	6.66%
Uncertain	0	0%
Disagree	0	0%
Strongly Disagree	0	0%

Mean	4.93
Median	5
Mode	5
Standard Deviation	0.26



5. How would you rate this guest lecturer overall as a teacher?

Excellent	23	76.66%
Very Good	5	16.66%
Good	1	3%
Fair	0	0%
Poor	0	0%

Mean	4.75
Median	5
Mode	5
Standard Deviation	0.50

