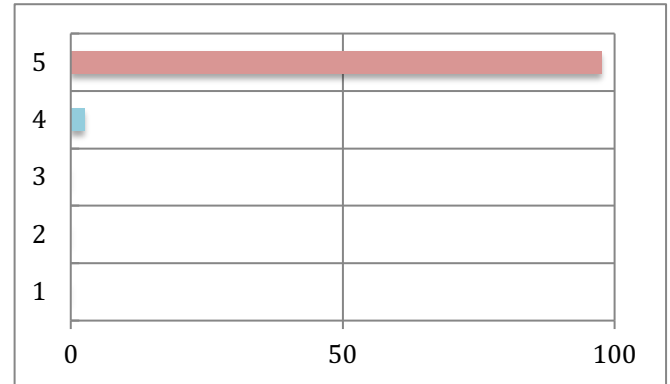


Spring 2018 – Guest Lecture Evaluation Report for SOCY 2210
Research Methods in Sociology
Lecture: So how do you study babies? Methods used in Developmental Psychology

1. The guest lecturer was prepared.

| | | |
|-------------------|----|--------|
| Strongly Agree | 39 | 97.50% |
| Agree | 1 | 2.50% |
| Uncertain | 0 | 0% |
| Disagree | 0 | 0% |
| Strongly Disagree | 0 | 0% |

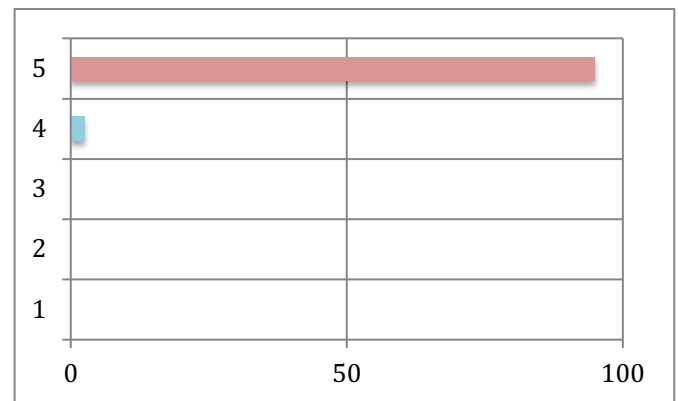
| | |
|--------------------|-------|
| Mean | 4.975 |
| Median | 5 |
| Mode | 5 |
| Standard Deviation | 0.16 |



2. The guest lecturer showed enthusiasm about the subject matter.

| | | |
|-------------------|----|--------|
| Strongly Agree | 32 | 95.00% |
| Agree | 1 | 2.50% |
| Uncertain | 0 | 0% |
| Disagree | 0 | 0% |
| Strongly Disagree | 0 | 0% |

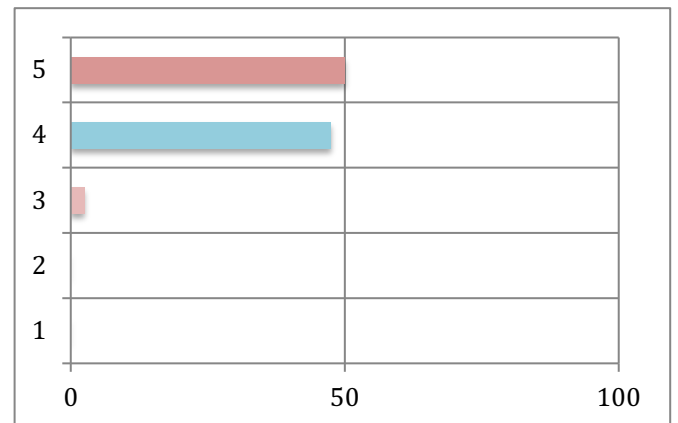
| | |
|--------------------|------|
| Mean | 4.96 |
| Median | 5 |
| Mode | 5 |
| Standard Deviation | .17 |



3. The guest lecturer stimulated interest in the subject matter.

| | | |
|-------------------|----|--------|
| Strongly Agree | 20 | 50.00% |
| Agree | 19 | 47.50% |
| Uncertain | 1 | 2.50% |
| Disagree | 0 | 0% |
| Strongly Disagree | 0 | 0% |

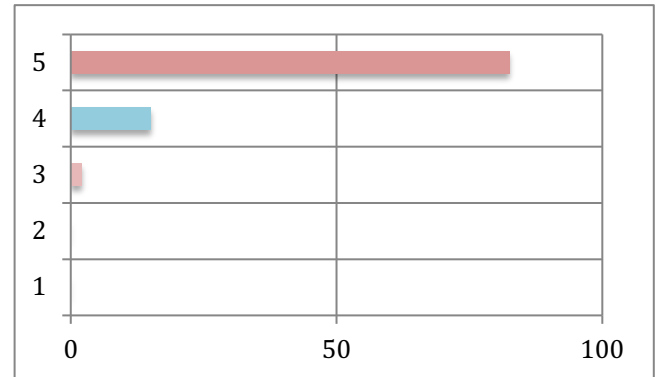
| | |
|--------------------|------|
| Mean | 4.48 |
| Median | 4.5 |
| Mode | 5 |
| Standard Deviation | 0.55 |



4. The guest lecturer's explanations were clear.

| | | |
|-------------------|----|--------|
| Strongly Agree | 33 | 82.50% |
| Agree | 6 | 15.00% |
| Uncertain | 0 | 0% |
| Disagree | 0 | 0% |
| Strongly Disagree | 0 | 0% |

| | |
|--------------------|------|
| Mean | 4.84 |
| Median | 5 |
| Mode | 5 |
| Standard Deviation | 0.36 |



5. How would you rate this guest lecturer overall as a teacher?

| | | |
|-----------|----|--------|
| Excellent | 34 | 85.00% |
| Very Good | 4 | 10.00% |
| Good | 0 | 0% |
| Fair | 0 | 0% |
| Poor | 0 | 0% |

| | |
|--------------------|------|
| Mean | 4.88 |
| Median | 5 |
| Mode | 5 |
| Standard Deviation | 0.32 |

